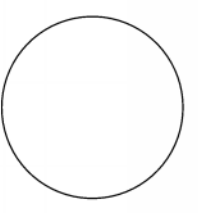


PROJECT LOCATION

CONSULTANT:



IOWA DEPARTMENT OF
NATURAL RESOURCES

ENGINEERING SERVICES - WALLACE BUILDING
502 E. 9TH ST., DES MOINES, IA 50319-0034



PROJECT LOCATION MAP

PCC BOAT RAMP REPAIR FOR:

3 MILE LAKE COUNTY PARK

UNION COUNTY

NO.	BY	REVISION

DRAWN BY: BLF
PROJECT NUMBER: 17-04-88-03
CHKD BY: DATE: APRIL 2010

SHEET No: A.02

ESTIMATED PROJECT QUANTITIES			
ITEM NO.	ITEM	UNIT	TOTAL
1	2528 - TRAFFIC CONTROL	LS	1
2	2529 - PATCHES, FULL-DEPTH FINISH, BY AREA	SY	57
3	2529 - PATCHES, FULL-DEPTH FINISH, BY COUNT	EA	3
4	2530 - PATCHES, PARTIAL-DEPTH P.C.C. FINISH	SF	50
5	2533 - MOBILIZATION	LS	1

ESTIMATE REFERENCE INFORMATION

ITEM NO.	DESCRIPTION
2	A. Class C mix. Submit mix design prior to work beginning. Dispose of removals off site. Verify areas to be remove with DNR field Engineer priop to work.
4	A. Use stainless steel, bulldog type anchors. Use an approved non-shrink grout for repairs. Submit grout prior to work beginning.

GENERAL NOTES

Verify actual locations and elevations with DNR Engineer.

All work shall conform to and be performed in accordance with all applicable codes and ordinances.

The contractor shall visit the site and inspect the project area and thoroughly familiarize themselves with the actual job conditions prior to bidding and the start of work. Failure to visit the project site shall not relieve the contractor from performing the work in accordance to the plans, specification, special provisions and contract.

The contractor shall verify, at the site, all dimensions and conditions shown on the plans and shall notify the DNR Engineer of any discrepancies, omissions, and/or conflicts prior to proceeding with the work.

It shall be the contractor's responsibility to provide waste areas or disposal sites for excess material (excavated material or broken concrete) which is not desirable to be incorporated into the work involved on this project. No payment for overhaul will be allowed for material hauled to these sites. No material shall be placed within the right-of-way, unless specifically stated in the plans or approved by the DNR Engineer.

The contractor shall not disturb desirable grass areas and desirable trees outside the construction limits. The contractor will not be permitted to park or service vehicles and equipment or use these areas for storage of materials. Storage, parking and service areas will be subject to the approval of the DNR Engineer.

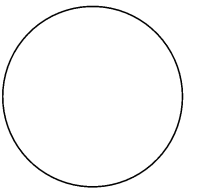
Where utilities and fixtures are shown as Existing on the plans or encountered within the construction area, it shall be the responsibility of the contractor to notify the DNR Engineer of those utilities prior to the beginning of any construction. The contractor shall be afforded access to these facilities for necessary modification of services. Underground facilities, structures and utilities have been plotted from available surveys and records and therefore their locations must be considered approximate only. It is possible there may be others, the existence of which is presently not known or shown. It is the contractor's responsibility to determine their existence and exact location and to avoid damage thereto. No claims for additional compensation will be allowed to the contractor for any interference or delay caused by such work.

The contractor shall shape graded area to maintain surface drainage. All elevations are to finish grade.

The contractor is expected to have materials, equipment, and labor available on a daily basis to install and maintain erosion control features on the project. This may involve seeding, silt fence, rock ditch checks, silt basins or silt dikes.

NO WORK FROM 12 NOON FRIDAYS, UNTIL THE FOLLOWING MONDAY.

CONSULTANT:



**IOWA DEPARTMENT OF
NATURAL RESOURCES**
ENGINEERING SERVICES - WALLACE BUILDING
502 E. 9TH ST., DES MOINES, IA 50319-0034



QUANTITIES AND GENERAL INFORMATION

PCC BOAT RAMP REPAIR FOR:
3 MILE LAKE COUNTY PARK
UNION COUNTY

NO.	BY	REVISION

DRAWN BY: BLF PROJECT NUMBER: 17-04-88-03
 CHKD BY: DATE: APRIL 2010
 SHEET No: **C.01**



12 SF PCC dock repair

8 SF PCC ramp repair

Remove and Replace 2 panels (8' X 8' each),
14 SY PCC Total. 2 patches

8 SF PCC ramp repair

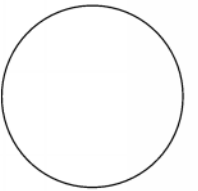
Remove and Replace 6 panels (8' X 48'),
43 SY PCC Total. 1 patch.

8 SF PCC ramp repair

14 SF PCC dock repair



CONSULTANT:



**IOWA DEPARTMENT OF
NATURAL RESOURCES**

ENGINEERING SERVICES - WALLACE BUILDING
502 E. 9TH ST., DES MOINES, IA 50319-0034



SITE PLAN

PCC BOAT RAMP REPAIR FOR:

3 MILE LAKE COUNTY PARK

UNION COUNTY

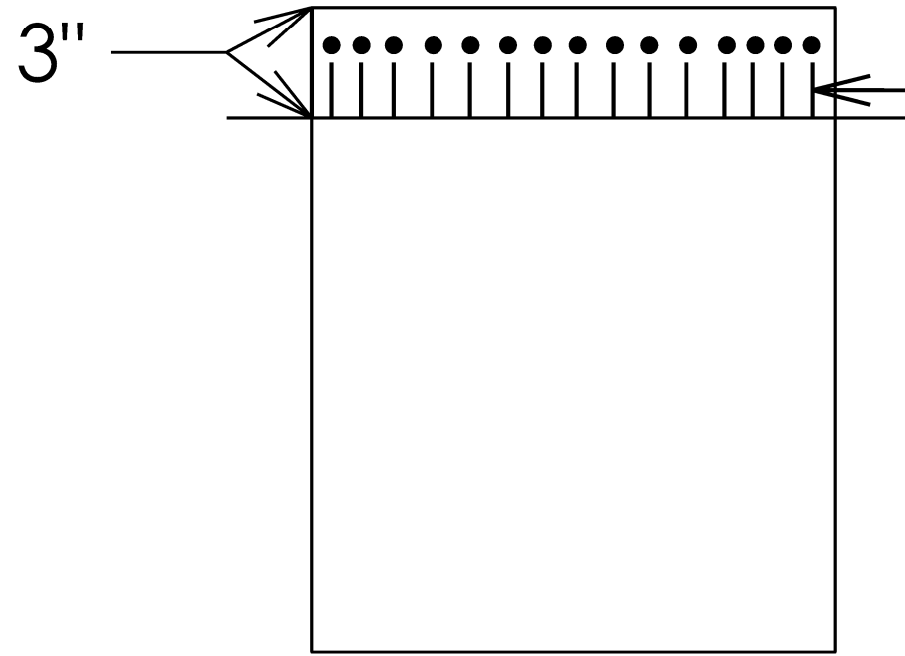
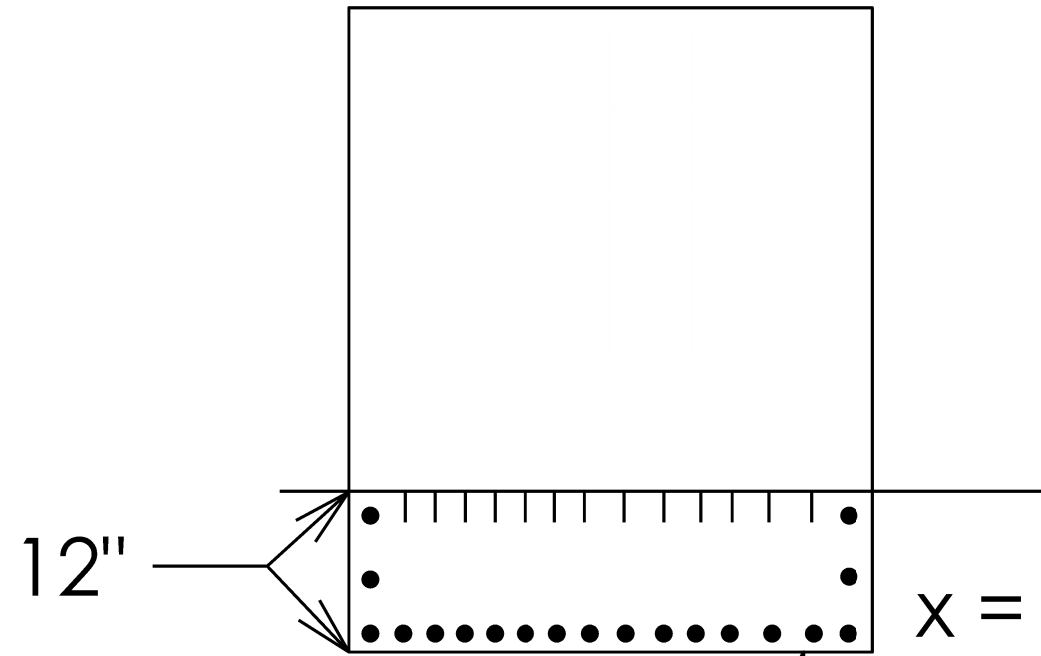
NO.	BY	REVISION

DRAWN BY: **BLF** PROJECT NUMBER: **17-04-88-03**
 CHKD BY: DATE: **APRIL 2010**

SHEET No: **D.01**

TOP VIEW DOCK

SIDE VIEW DOCK



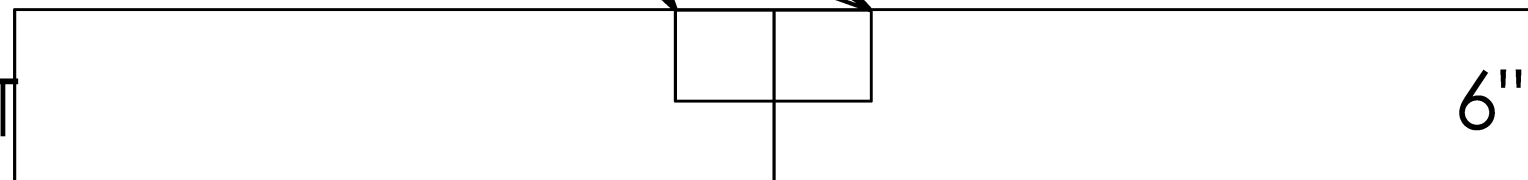
Anchors
2 inch cover

x = Anchor placement. 2 inches from outside edges, every 6 inches around perimeter.

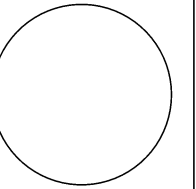
Remove 12" X 8' 3" deep. Install SS bulldog type anchors

Width and length varies. Depth is 3 inches

SIDE VIEW RAMP JOINT



CONSULTANT:



IOWA DEPARTMENT OF NATURAL RESOURCES

ENGINEERING SERVICES - WALLACE BUILDING
502 E. 9TH ST., DES MOINES, IA 50319-0034



SITE PLAN

PCC BOAT RAMP REPAIR FOR:

3 MILE LAKE COUNTY PARK

UNION COUNTY

NO. BY REVISION

DRAWN BY: PROJECT NUMBER:

BLF 17-04-88-03

CHKD BY: DATE:

APRIL 2010

SHEET No:

D.02